

Counterexample to regularity in average-distance problem

Dejan Slepčev

Department of Mathematical Sciences, Carnegie Mellon University, Pittsburgh, PA 15213, United States

Received 27 September 2012; received in revised form 3 February 2013; accepted 5 February 2013

Available online 19 February 2013

Abstract

The average-distance problem is to find the best way to approximate (or represent) a given measure μ on \mathbb{R}^d by a one-dimensional object. In the penalized form the problem can be stated as follows: given a finite, compactly supported, positive Borel measure μ , minimize

$$E(\Sigma) = \int_{\mathbb{R}^d} d(x, \Sigma) d\mu(x) + \lambda \mathcal{H}^1(\Sigma)$$

among connected closed sets, Σ , where $\lambda > 0$, $d(x, \Sigma)$ is the distance from x to the set Σ , and \mathcal{H}^1 is the one-dimensional Hausdorff measure. Here we provide, for any $d \geq 2$, an example of a measure μ with smooth density, and convex, compact support, such that the global minimizer of the functional is a rectifiable curve which is not C^1 . We also provide a similar example for the constrained form of the average-distance problem.

© 2013 Elsevier Masson SAS. All rights reserved.

MSC: 49Q20; 49K10; 49Q10; 05C05; 35B65

Keywords: Average-distance problem; Nonlocal variational problem; Regularity

1. Introduction

Given a positive, compactly supported, Borel measure μ on \mathbb{R}^d , $d \geq 2$, $\lambda > 0$, and Σ a nonempty subset of \mathbb{R}^d consider

$$E(\Sigma) = \int_{\mathbb{R}^d} d(x, \Sigma) d\mu(x) + \lambda \mathcal{H}^1(\Sigma). \quad (1)$$

The average-distance problem is to minimize the functional over $\mathcal{A} = \{\Sigma \subset \mathbb{R}^d: \Sigma \text{ — connected and compact}\}$.

E-mail address: slepcev@math.cmu.edu.

The problem was introduced by Buttazzo, Oudet, and Stepanov [1] and Buttazzo and Stepanov [2]. They studied the problem in the constrained form, where instead of \mathcal{H}^1 penalization one minimizes

$$F(\Sigma) = \int_{\mathbb{R}^d} d(x, \Sigma) d\mu(x) \quad \text{over } \mathcal{A}_1 := \{\Sigma \in \mathcal{A} : \mathcal{H}^1(\Sigma) \leq \ell\}. \quad (2)$$

Over the past few years there has been a significant progress on understanding of the functional; some of which we outline below. An excellent overview article has recently been written by Lemenant [3].

The problem has wide ranging applications. When interpreted as a simplified description of designing the optimal public transportation network then μ represents the distribution of passengers, and Σ is the network. The desire is to design the network that minimizes the total distance of passengers to the network. Another related problem which can be reduced to the average-distance problem, studied in [1], is when we think of passengers as workers that need to get to their workplace. Then two measures are initially given, the distribution of where workers reside and where they work. Again the goal is to find the optimal network that minimizes the total transportation cost (traveling along the network is for free).

A related interpretation is that of finding the optimal irrigation network (the *irrigation problem*).

Another interpretation, whose application in a related setting is presently investigated by Laurent and the author, is to find a good one-dimensional representation to a data cloud. Here μ represents the distribution of data points. One wishes to approximate the cloud by a one-dimensional object. The first term in (1) then charges the errors in the approximation, while the second one penalizes the complexity of the representation.

The existence of minimizers of E follows from the theorems of Blaschke and Gołab [2]. In this paper we investigate their regularity. It was shown in [2] that, at least for $d = 2$, the minimizer is topologically a tree made of finitely many simple rectifiable curves which meet at triple junctions (no more than three branches can meet at one point). The authors also show that the minimizer is Ahlfors regular (which was extended to higher dimensions by Paolini and Stepanov [4]), but further regularity of branches remained open. Recently Tilli [5] showed that every compact simple $C^{1,1}$ curve is a minimizer of the average-distance problem (in the constrained form (27)) where μ is the characteristic function of a small tubular neighborhood of the curve. This suggests that $C^{1,1}$ is the best regularity for minimizers one can expect (even if μ were smooth). Further criteria for regularity were established by Lemenant [6].

Due to the presence of the \mathcal{H}^1 term one might expect that, if μ is a measure with smooth density, Σ is at least C^1 . A recent paper by Buttazzo, Mainini, and Stepanov [7] suggests that this may not be the case, and exhibits a measure μ which is a characteristic function of a set in \mathbb{R}^2 , for which there exists a stationary point of E which has a corner. Furthermore the results on the blow-up of the problem by Santambrogio and Tilli [8] support the possibility of corners. Here we prove that minimizers which are not C^1 are indeed possible. That is for any $d \geq 2$ provide an example of a measure μ with smooth density for which we prove that the minimizer is a curve which has a corner, and is thus not C^1 . One of the difficulties in dealing with global energy minimizers is that the functional is not convex. To be able to treat them we introduce constructions and an approximation technique that may be of independent interest.

Our approach is based on approximating the measure μ of our interest by particle measures μ_n (i.e. the ones that have only atoms). For particle measures μ_n the average-distance problem (1) has a discrete formulation that can be carefully analyzed. In particular the minimizers are trees with piecewise linear branches. Our starting point is the construction of a particle measure with three particles, $\bar{\mu}$, for which we can show that the minimizer is a wedge (curve with exactly two line segments), see Fig. 1. We then show that if $\bar{\mu}$ is smoothed out a bit then the minimizer will still have a corner (even if we also add a smooth background measure of small total mass, q , that makes the support of the perturbed measure convex). We denote the smooth perturbed measure by $\mu_{q,\delta}$ where δ is the smoothing parameter. To show that a minimizer of E for $\mu_{q,\delta}$ has a corner when δ and q are small, we consider discrete approximations $\mu_{q,\delta,n}$ of $\mu_{q,\delta}$. We show that the minimizers $\Sigma_{q,\delta,n}$ of E corresponding to $\mu_{q,\delta,n}$ have a corner whose opening is bounded from above independent of n . We furthermore obtain appropriate estimates on the minimizers which guarantee convergence as $n \rightarrow \infty$ to a minimizer $\Sigma_{q,\delta}$ of E corresponding to $\mu_{q,\delta}$ and insure that the corner remains in the limit.

1.1. Outline

In Section 2 we list some of the basic properties of the functional E given in (1), in particular its continuity properties with respect to parameters and scaling with respect to dilation of μ . In Section 3 we consider the energy (1)

with μ being a particle measure. We obtain conditions for criticality, information of the projection of the measure μ onto the minimizer Σ , and a priori estimates on the curvature (turning angle). The basic three-particle configuration, $\bar{\mu}$, for which the minimizer is a wedge is also introduced. The construction of the counterexample is carried out in Section 4. We introduce the perturbation and use elementary geometry to obtain various geometric facts about the minimizer of the average-distance problem corresponding to the discrete approximation of the perturbed measure: $\mu_{q,\delta,n}$. The result of these efforts is that the minimizer must have a corner with a large turning angle (jump in the tangent direction). Finally we take the limit $n \rightarrow \infty$ to obtain that the minimizer for $\mu_{q,\delta}$ has a corner too. In Section 5 we use a scaling argument to show that the minimizers of the constrained problem (2) can have corners too.

2. Properties of the functional

Let \mathcal{A} be the set of compact connected subsets of \mathbb{R}^d . Given $\Sigma \in \mathcal{A}$, for $y \in \Sigma$ we define the *region of influence* of y ,

$$R(y) = \{x \in \mathbb{R}^d : (\forall z \in \Sigma) d(x, z) \geq d(x, y)\}. \tag{3}$$

In the next two lemmas we study continuity properties of E with respect to dependence on Σ and μ .

Lemma 1. *For any $\mu \in \mathcal{P}_R$ and any $\lambda > 0$, the functional $E_\mu : \mathcal{A} \rightarrow \mathbb{R}$ is lower semicontinuous with respect to Hausdorff convergence.*

Proof. Assume that $\Sigma_n \in \mathcal{A}$ converge to Σ in Hausdorff metric, d_H . Gołab’s theorem (see [9]) gives the lower-semicontinuity of the \mathcal{H}^1 measure. Thus it is enough to prove the continuity of the first term of the energy. Note that for any $x \in \mathbb{R}^d$,

$$|d(x, \Sigma_n) - d(x, \Sigma)| \leq d_H(\Sigma_n, \Sigma).$$

To illustrate why, assume that for some x ,

$$d(x, \Sigma_n) > d(x, \Sigma) + d_H(\Sigma_n, \Sigma).$$

Considering y to be the closest point to x on Σ gives

$$d(x, \Sigma_n) > d(x, y) + \inf_{z \in \Sigma_n} d(y, z) \geq d(x, \Sigma_n)$$

which is a contradiction. Thus

$$\left| \int_{\mathbb{R}^d} d(x, \Sigma_n) d\mu(x) - \int_{\mathbb{R}^d} d(x, \Sigma) d\mu(x) \right| \leq d_H(\Sigma_n, \Sigma) \mu(\mathbb{R}^d)$$

which implies the claim. \square

Lemma 2. *Consider $\Sigma \in \mathcal{A}$ and $\lambda > 0$. The mapping $\mu \mapsto E_\mu(\Sigma)$ is continuous with respect to weak-* convergence of measures in \mathcal{P}_R .*

Proof. We recall that the Wasserstein metric, d_W , metrizes the weak-* convergence of measures on the set of measures supported in $B(0, R)$. Therefore if $\mu_n \xrightarrow{*} \mu$ in \mathcal{P}_R then $d_W(\mu_n, \mu) \rightarrow 0$ as $n \rightarrow \infty$. Hence there exists a coupling (i.e. a transportation plan), Π_n between μ and μ_n such that

$$\int_{B(0,R) \times B(0,R)} |x - y|^2 d\Pi_n(x, y) \rightarrow 0 \quad \text{as } n \rightarrow \infty.$$

Therefore

$$\begin{aligned} \left| \int_{\mathbb{R}^d} d(x, \Sigma) d\mu_n(x) - \int_{\mathbb{R}^d} d(x, \Sigma) d\mu(x) \right| &= \left| \int_{\mathbb{R}^d \times \mathbb{R}^d} d(x, \Sigma) - d(y, \Sigma) d\Pi_n(x, y) \right| \\ &\leq \int_{\mathbb{R}^d \times \mathbb{R}^d} |x - y| d\Pi_n(x, y) \\ &\leq \sqrt{R} d_W(\mu_n, \mu) \rightarrow 0 \quad \text{as } n \rightarrow \infty. \quad \square \end{aligned} \quad (4)$$

Lemma 3. *If $\mu_n \xrightarrow{*} \mu$ in the weak topology of measures in \mathcal{P}_R then $E_{\mu_n} \xrightarrow{\Gamma} E_\mu$ with respect to Hausdorff convergence of sets on \mathcal{A} .*

Proof. To prove the Γ -convergence we need to show the following

- Lower-semicontinuity. Assume $\mu_n \xrightarrow{*} \mu$ and $\Sigma_n \rightarrow \Sigma$ in Hausdorff metric as $n \rightarrow \infty$. Then

$$\liminf_{n \rightarrow \infty} E_{\mu_n}(\Sigma_n) \geq E_\mu(\Sigma).$$

- Construction. Assume $\mu_n \xrightarrow{*} \mu$. For any $\Sigma \in \mathcal{A}$ there exists a sequence $\Sigma_n \in \mathcal{A}$, such that $\Sigma_n \rightarrow \Sigma$ in Hausdorff metric and

$$\lim_{n \rightarrow \infty} E_{\mu_n}(\Sigma_n) = E_\mu(\Sigma).$$

The construction claim follows from Lemma 2 by taking $\Sigma_n = \Sigma$.

Let us consider the lower-semicontinuity. As before, $\mu_n \xrightarrow{*} \mu$ implies $d_W(\mu_n, \mu) \rightarrow 0$ as $n \rightarrow \infty$. As in the estimate (4)

$$\left| \int_{\mathbb{R}^d} d(x, \Sigma_n) d\mu_n(x) - \int_{\mathbb{R}^d} d(x, \Sigma_n) d\mu(x) \right| \leq \sqrt{R} d_W(\mu_n, \mu) \rightarrow 0 \quad \text{as } n \rightarrow \infty.$$

We note that the bound does not depend on Σ_n . Therefore, using Lemma 1,

$$\liminf_{n \rightarrow \infty} E_{\mu_n}(\Sigma_n) = \liminf_{n \rightarrow \infty} E_\mu(\Sigma_n) \geq E_\mu(\Sigma). \quad \square$$

Corollary 4. *Assume that $\mu_n \xrightarrow{*} \mu$ in \mathcal{P}_R and that Σ_n is a minimizer of E_{μ_n} . Then along a subsequence $\Sigma_n \xrightarrow{d_H} \Sigma$ where Σ is a minimizer of E_μ .*

Proof. Since by Blaschke's theorem (see [9]) the sequence Σ_n has a subsequence which converges in Hausdorff metric the claim follows from the Γ convergence. \square

Corollary 5. *Assume E_μ has a unique minimizer Σ and that $\mu_n \xrightarrow{*} \mu$ in \mathcal{P}_R . Then for every $\varepsilon > 0$ there exists n_0 such that for all $n \geq n_0$ any minimizer Σ_n of E_{μ_n} satisfies $d_H(\Sigma, \Sigma_n) < \varepsilon$.*

Proof. Assume that the claim does not hold. Then there exists $\varepsilon > 0$ and a sequence Σ_{n_k} of minimizers of $E_{\mu_{n_k}}$ such that for each k , $d_H(\Sigma, \Sigma_{n_k}) \geq \varepsilon$. By relabeling, we can assume $n_k = k$ for all k . By Blaschke's theorem, there exists $\tilde{\Sigma} \in \mathcal{A}$ such that, along a subsequence, $\Sigma_n \rightarrow \tilde{\Sigma}$ as $n \rightarrow \infty$ in Hausdorff metric. We can again assume that the subsequence is the whole sequence. Furthermore $\tilde{\Sigma}$ is connected and thus belongs to \mathcal{A} . We note that $d_H(\Sigma, \tilde{\Sigma}) \geq \varepsilon$. By the lower-semicontinuity part in the Γ -convergence, $\tilde{\Sigma}$ is a minimizer of E_μ , which contradicts the uniqueness assumption. \square

Lemma 6. Let $R > 0$. Let $\gamma_n : [0, 1] \rightarrow \overline{B}(0, R)$ be a sequence of Lipschitz curves with constant-speed parameterization (i.e. $|\gamma'_n(s)| = \text{length}(\gamma_n)$ for a.e. $s \in [0, 1]$). Assume that $\sup_n \text{length}(\gamma_n)$ and $\sup_n \|\gamma'_n\|_{BV}$ are finite. Then along a subsequence γ_n converges to a Lipschitz curve γ in the sense that

$$\begin{aligned} \gamma_n &\rightarrow \gamma \quad \text{in } C^\alpha \text{ as } n \rightarrow \infty, \text{ for any } \alpha \in [0, 1), \\ \gamma'_n &\rightarrow \gamma' \quad \text{in } L^p \text{ as } n \rightarrow \infty, \text{ for any } p \in [1, \infty), \quad \text{and} \\ \gamma''_n &\xrightarrow{*} \gamma'' \quad \text{in the space of finite signed Borel measures as } n \rightarrow \infty. \end{aligned}$$

Proof. The constant-speed assumption and the uniform bound on the lengths imply that $\|\gamma'_n\|_{L^\infty}$ are uniformly bounded and thus there is a uniform bound on the Lipschitz norm for the curves. The fact that γ_n converges along a subsequence in C^α for any $\alpha \in [0, 1)$ follows since the set of Lipschitz functions with values in $\overline{B}(0, R)$, is compactly embedded in C^α . To obtain the convergence that holds for all α at the same time one also uses a diagonalization argument.

From the embedding theorem of BV spaces (see [9,10]), it follows that for some $g \in BV([0, 1], \mathbb{R}^d)$, along a further subsequence, $\gamma'_n \rightarrow g$ in L^1 as $n \rightarrow \infty$ and $\gamma''_n \xrightarrow{*} g'$ in the space of signed measures as $n \rightarrow \infty$. Using the definition of the weak derivative it follows that $g = \gamma'$. Since $\|\gamma'_n\|_{L^\infty}$ are uniformly bound by interpolation it follows that for all $p \in [1, \infty)$, $\gamma'_n \rightarrow \gamma'$ in L^p as $n \rightarrow \infty$. Furthermore $|\gamma'_n| \rightarrow |\gamma'|$ in L^1 as $n \rightarrow \infty$ and the constant-speed assumption imply that and moreover $|\gamma'(s)| = \text{length}(\gamma)$ for a.e. $s \in [0, 1]$ and in particular γ is a Lipschitz curve. \square

2.1. Scaling of E_μ with respect to dilations of μ

Given a set $A \subset \mathbb{R}^d$ and $r > 0$ we define $\frac{A}{r} = \{x: rx \in A\}$.

Given a measure μ and $r > 0$ we define the dilation of μ to scale r to be the measure $D_r\mu$ such that for any μ -measurable set A

$$D_r\mu(A) = \mu\left(\frac{A}{r}\right).$$

We note that since both terms of E are scale linearly with respect to length

$$E_\mu(\Sigma) = \frac{1}{r} E_{D_r\mu}(r\Sigma).$$

Therefore if Σ is a minimizer of E_μ then $r\Sigma$ is a minimizer of $E_{D_r\mu}$.

3. Discrete data

In this section we consider the case that μ is a discrete (or particle) measure:

$$\mu = \sum_{i=1}^n m_i \delta_{x_i} \tag{5}$$

where $m_i > 0$ and $x_i \in \mathbb{R}^d$. The measures $m_i \delta_{x_i}$ are called *particles*. We denote the support of μ by $X = \{x_1, \dots, x_n\}$.

Lemma 7. If μ is discrete then every minimizer Σ is graph with straight edges.

Proof. Let $\varphi : X \rightarrow \Sigma$ be the mapping that assigns to each $x_i \in X$ a point on Σ which is the closest to x_i (if the closest point is nonunique, an arbitrary one is chosen). Let $y_i = \varphi(x_i)$ and $Y = \{y_1, \dots, y_n\}$ (the points are not necessarily distinct). Let A be the Steiner tree containing the set Y . The *Steiner tree* is the connected graph with minimal total length of edges containing the vertices in Y (it can have other vertices as well). We note that it is also the connected set of minimal \mathcal{H}^1 measure containing Y . For further information on Steiner trees we refer to [11] and [12].

Furthermore note that $E(A) \leq E(\Sigma)$ with equality holding only if Σ is also a Steiner tree, which proves the claim. We remark that Σ may be different than A since Steiner trees are not necessarily unique. \square

Now that we know that Σ has straight edges, we can study it more carefully. We define the vertices, V as the set of those points v in Σ for which there exists a point x in X such that v is the closest point to x in Σ :

$$V = \{v \in \Sigma: (\exists x \in X) (\forall z \in \Sigma) d(x, v) \leq d(x, z)\}. \tag{6}$$

Note that $Y \subset V$ and that it is possible that at a vertex of degree two the angle is 180° . Since, by above the segments of Σ connecting the vertices must be line segments, we define edges, S , as follows: for $v, w \in V$, $\{v, w\} \in S$ is an edge if the line segment $[v, w] \subseteq \Sigma$. We note that since Σ is made of finitely many line segments, V must be finite. Thus we can write $V = \{v_1, \dots, v_m\}$. Since

$$\int_{\mathbb{R}^d} d(x, \Sigma) d\mu(x) = \sum_{i=1}^n m_i d(x_i, \Sigma) = \sum_{i=1}^n m_i d(x_i, V),$$

Σ must be connected the graph of minimal total length containing the vertices V . That is Σ is a Steiner tree [11] for the set V too.

The following facts on Steiner trees are available in the classical paper by Gilbert and Pollak [11].

Proposition 8. *Let $G = (V, S)$ be as above. Then*

- (i) *G is a tree, that is it does not contain a closed loop.*
- (ii) *If $\{u, v\}$ and $\{v, w\}$ are edges then the angle $\angle uvw \geq 120^\circ$.*
- (iii) *The maximal degree of a vertex is three.*
- (iv) *If v is a vertex of degree three then the angles between edges at v are 120° , and thus all three edges belong to a 2-dimensional plane.*

We call the vertices of degree one the *endpoints*, the ones of degree two *corners*, and the ones of degree three *triple junctions*. Given $j = 1, \dots, m$ let I_j be the set of indices of points in X for which v_j is the closest point in V

$$\begin{aligned} I_j &= \{i \in \{1, \dots, n\}: (\forall k = 1, \dots, m) d(x_i, v_j) \leq d(x_i, v_k)\} \\ &= \{i \in \{1, \dots, n\}: (\forall y \in \Sigma) d(x_i, v_j) \leq d(x_i, y)\}. \end{aligned} \tag{7}$$

If $i \in I_j$ then we say that x_i *talks to* v_j . We say that a vertex v_j is *tied down* if for some i , $v_j = x_i$. We then say that v_j is *tied to* x_i . Note that if v_j is tied to x_i then $i \in I_j$ and $T_{ij} = m_i$. A vertex which is not tied down is called *free*. We show below that if x_i talks to v_j and v_j is free then x_i cannot talk to any other vertex.

Consider an n by m matrix T such that

$$T_{ij} \geq 0, \quad \sum_{j=1}^m T_{ij} = m_i, \quad \text{and} \quad T_{ij} > 0 \quad \text{implies} \quad i \in I_j. \tag{8}$$

Note that $\mu = \sum_{i=1}^n \sum_{j=1}^m T_{ij} \delta_{x_i}$. We define σ to be the projection of μ onto the set Σ , in the sense that the mass from μ is transported to a closest point on Σ . That is

$$\sigma = \sum_{j=1}^m \sum_{i=1}^n T_{ij} \delta_{v_j}. \tag{9}$$

We note that the matrix T describes an optimal transportation plan between μ and σ with respect to any of the transportation costs $c(x, y) = |x - y|^p$, for $p \geq 1$. We claim that such matrix T exists. It is enough to consider mapping φ from the proof of Lemma 7 and then define

$$T_{ij} = \begin{cases} m_i & \text{if } \varphi(x_i) = v_j, \\ 0 & \text{otherwise.} \end{cases}$$

We note that in this discrete setting

$$\begin{aligned}
 E(\Sigma) &= \sum_{i=1}^n m_i d(x_i, \Sigma) + \lambda \sum_{\{v,w\} \in S} |v - w| \\
 &= \sum_{j=1}^m \sum_{i \in I_j} T_{ij} |x_i - v_j| + \lambda \sum_{\{v_j, v_k\} \in S} |v_j - v_k|.
 \end{aligned}
 \tag{10}$$

Lemma 9. Assume that Σ minimizes E for discrete μ defined in (5). Let V be the set of vertices as defined in (7) and T be any matrix (transportation plan) satisfying (8). For any vertex v_j :

(i) If v_j is an endpoint then let w be the vertex such that $\{v_j, w\}$ is an edge. If v_j is free then

$$\sum_{i \in I_j} T_{ij} \frac{x_i - v_j}{|x_i - v_j|} + \lambda \frac{w - v_j}{|w - v_j|} = 0.
 \tag{11}$$

If v_j is tied to x_k then

$$\left| \sum_{i \in I_j, i \neq k} T_{ij} \frac{x_i - v_j}{|x_i - v_j|} + \lambda \frac{w - v_j}{|w - v_j|} \right| \leq m_k.
 \tag{12}$$

(ii) If v_j is a corner then let $\{w_1, v_j\}$ and $\{v_j, w_2\}$ be the edges at the corner. If v_j is free then

$$\sum_{i \in I_j} T_{ij} \frac{x_i - v_j}{|x_i - v_j|} + \lambda \left(\frac{w_1 - v_j}{|w_1 - v_j|} + \frac{w_2 - v_j}{|w_2 - v_j|} \right) = 0.
 \tag{13}$$

If v_j is tied to x_k then

$$\left| \sum_{i \in I_j, i \neq k} T_{ij} \frac{x_i - v_j}{|x_i - v_j|} + \lambda \left(\frac{w_1 - v_j}{|w_1 - v_j|} + \frac{w_2 - v_j}{|w_2 - v_j|} \right) \right| \leq m_k.
 \tag{14}$$

(iii) If v_j is a triple junction and if v_j is free then

$$\sum_{i \in I_j} T_{ij} \frac{x_i - v_j}{|x_i - v_j|} = 0.
 \tag{15}$$

If v_j is tied to x_k then

$$\left| \sum_{i \in I_j} T_{ij} \frac{x_i - v_j}{|x_i - v_j|} \right| \leq m_k.
 \tag{16}$$

Proof. To prove (i) and (ii), consider now the configuration Σ_v which is obtained from Σ just by changing the location of v_j to v . Let S_v be the set of edges of the new graph. Formulation (10) provides

$$\begin{aligned}
 E(\Sigma_v) &\leq \sum_{i \in I_j} T_{ij} |x_i - v| + \lambda \sum_{\{v, v_l\} \in S_v} |v - v_l| + \sum_{l=1, l \neq j}^m \sum_{i \in I_l} T_{il} |x_i - v_l| + \lambda \sum_{\{v_k, v_l\} \in S_v} |v_k - v_l| \\
 &=: F(v).
 \end{aligned}$$

Note that F defined above maps $\mathbb{R}^d \rightarrow \mathbb{R}$ and that $E(\Sigma) = F(v_j)$.

If v_j is a free vertex then F is a smooth function near v_j . The minimality of Σ thus implies that $DF(v_j) = 0$. Straightforward computation of DF gives the conditions (11) and (13).

If on the other hand v_j is tied to x_k for some k , $x_k = v_j$ then recall that $k \in I_j$ and furthermore $T_{kj} = m_k$. F is no longer smooth at v_j but it still has a minimum at v_j . Therefore zero vector must belong to the subgradient of F at v_j ,

that is $0 \in \partial F(v_j)$. Using that the subgradient at 0 of $z \mapsto |z|$ is $B(0, 1)$ we conclude that $0 \in \partial F(v_j)$ if the conditions (12) and (14) hold at an endpoint and corner, respectively. More precisely if we define

$$\tilde{F}(v) = \sum_{i \in I_j, i \neq k} T_{ij} |x_i - v| + \lambda \sum_{\{v, v_l\} \in S_v} |v - v_l|.$$

Then, using $v_j = x_k$,

$$F(v) = m_k |v_j - v| + \tilde{F}(v) + \text{const.}$$

and hence

$$\partial F(v_j) = B(0, m_k) + D\tilde{F}(v_j).$$

Therefore $0 \in \partial F(v_j)$ if $|D\tilde{F}(v_j)| \leq m_k$.

Obtaining (15) and (16) is analogous, only that one also needs the fact that the angles at triple junction are 120° , see Proposition 8. \square

Corollary 10. *Assume that conditions of the lemma are satisfied.*

- (i) *In two dimensions, $d = 2$, if v_j is a triple junction and is a free vertex then $I_j = \emptyset$.*
- (ii) *If i talks to v_j and v_k ($j \neq k$) then both v_j and v_k are tied down. Consequently if x_i talks to v_j and v_j is free then $T_{ij} = m_i$. Furthermore $m \leq n$.*
- (iii) *If v_j is an endpoint then*

$$\sum_{i \in I_j} T_{ij} \geq \lambda. \tag{17}$$

Hence at every endpoint, the measure σ defined in (9) has an atom of the mass at least equal to λ . Note that this gives an upper bound on the number of endpoints. A further consequence is that if $2\lambda > \sum_{i=1}^n m_i$ then the minimizer Σ is just a single point (which is then a vertex of degree zero).

Proof. To prove (i) assume that $i \in v_j$. Then $B(x_i, |v_j - x_i|) \cap \Sigma = \emptyset$. But this contradicts the fact that the angles at triple junction are 120° .

To prove (ii) assume that there exist $i \in \{1, \dots, n\}$ and j, k distinct elements of $\{1, \dots, m\}$ such that $i \in I_j$ and $i \in I_k$. Let T be a matrix satisfying the condition (8). For $s \in (0, 1)$ consider the matrix $T(s)$ obtained from T by setting:

$$T_{ij}(s) = m_i(1 - s), \quad T_{ik} = m_i s \quad \text{and} \quad T_{il} = 0 \quad \text{if } l \notin \{j, k\}.$$

Note that $T(s)$ satisfies the condition (8).

We argue by contradiction: assume that v_j is free. Let us consider first the case that v_j is an endpoint. Let w be the vertex for which $\{v, w\}$ is an edge. The condition (11) must be satisfied for $T(s)$ for all $s \in [0, 1]$:

$$m_i(1 - s) \frac{x_i - v_j}{|x_i - v_j|} + \sum_{l \in I_j, l \neq i} T_{lj} \frac{x_l - v_j}{|x_l - v_j|} + \lambda \frac{w - v_j}{|w - v_j|} = 0.$$

One arrives at a contradiction by taking the derivative in s .

The proofs for a corner and for a triple junction are analogous.

Let us explain why the above implies $m \leq n$. By definition of V , for each $v_j \in V$, $I_j \neq \emptyset$, that there is a particle talking to v_j . We claim that for every v_j there is a particle talking *only* to v_j . If v_j is free then by above this is the case with any particle in I_j . If v_j is tied to x_k then x_k only talks to v_j . Consequently there must be more particles than vertices in V .

Let us now consider the claim of (iii). There are two cases. We first consider the case that v_j is free. Then (11) holds. Taking the inner product with $\frac{w - v_j}{|w - v_j|}$ and using (ii) above gives

$$-\sum_{i \in I_j} m_i \frac{x_i - v_j}{|x_i - v_j|} \cdot \frac{w - v_j}{|w - v_j|} = \lambda.$$

Thus

$$\sum_{i \in I_j} m_i \geq \sum_{i \in I_j} m_i \left| \frac{x_i - v_j}{|x_i - v_j|} \cdot \frac{w - v_j}{|w - v_j|} \right| \geq \lambda.$$

If v_j is tied to x_k for some k then the condition (12) gives

$$\left| \sum_{i \in I_j, i \neq k} T_{ij} \frac{x_i - v_j}{|x_i - v_j|} \cdot \frac{w - v_j}{|w - v_j|} + \lambda \right| \leq m_k.$$

Thus

$$\lambda \leq m_k - \sum_{i \in I_j, i \neq k} T_{ij} \frac{x_i - v_j}{|x_i - v_j|} \cdot \frac{w - v_j}{|w - v_j|} \leq \sum_{i \in I_j} T_{ij}. \quad \square$$

3.1. Turning angle

If v is a corner with adjacent vertices w_1 and w_2 then the *turning angle* at v is $TA(v) = \pi - \angle w_1 v w_2$. Basically it describes the curvature at v . For $A \subset \Sigma$, the turning angle of A , $TA(A) = \sum_{v \in A \cap V} TA(v)$. The total turning angle, $T TA = TA(\Sigma)$.

Lemma 11. *If Σ is a minimizer of E and $A \subset \Sigma$.*

$$TA(A) \leq \frac{\pi}{2\lambda} \sum_{i \in \cup\{I_j: v_j \in A\}} m_i. \tag{18}$$

Proof. Let us first consider the case that A is a single corner, $A = \{v_j\}$. Let w_1 and w_2 be the adjacent vertices. Let α be the half of the turning angle: $TA(v_j) = 2\alpha$. Then $\angle w_1 v_j w_2 = \pi - 2\alpha$. Let $\theta_1 = \frac{v_j - w_1}{|v_j - w_1|}$ and $\theta_2 = \frac{w_2 - v_j}{|w_2 - v_j|}$. Elementary geometry yields that $|\theta_2 - \theta_1| = 2 \sin \alpha$.

Analogously to the proof of statement (iii) of Corollary 10, that is by using conditions (13) and (14) and taking inner product with $\frac{\theta_2 - \theta_1}{|\theta_2 - \theta_1|}$, one can show that

$$2\lambda \sin \alpha \leq \sum_{i \in I_j} T_{ij}. \tag{19}$$

Therefore

$$\alpha \leq \max \left\{ \frac{\pi}{2}, \arcsin \left(\frac{\sum_{i \in I_j} T_{ij}}{2\lambda} \right) \right\} \leq \frac{\pi}{2} \frac{\sum_{i \in I_j} T_{ij}}{2\lambda}$$

which establishes the claim.

For the general $A \subset \Sigma$ it suffices to sum over the vertices it contains. \square

3.2. Region of influence

Given orthogonal unit vectors ξ and b and an angle $\beta \in [0, \frac{\pi}{2}]$, consider the wedge W , with bisector b and opening 2β , defined as follows:

$$W(\xi, b, \beta) = \{x \in \mathbb{R}^d: |\xi \cdot x| < b \cdot x \tan \beta\}. \tag{20}$$

By $\llbracket z_1, \dots, z_k \rrbracket$ we denote the piecewise linear curve connecting the points z_1, \dots, z_k . Given three points v_1, v_2 , and v_3 such that if they are collinear then v_2 lies between v_1 and v_3 consider $\Sigma = \llbracket v_1, v_2, v_3 \rrbracket$. If the points are collinear the region of influence of v_2 , defined in (3), is the hyperplane passing through v_2 , orthogonal to $v_3 - v_2$. If points are not collinear then let $\theta_i = \frac{v_{i+1} - v_i}{|v_{i+1} - v_i|}$ for $i = 1, 2$. The region of influence of v_2 the translated wedge: $R(v_2) = v_2 + W(\xi, b, \beta)$ where $\xi = \frac{\theta_1 + \theta_2}{|\theta_1 + \theta_2|}$, $b = \frac{\theta_1 - \theta_2}{|\theta_1 - \theta_2|}$ and $\beta = TA(v_2)/2$. We denote the mapping above that outputs

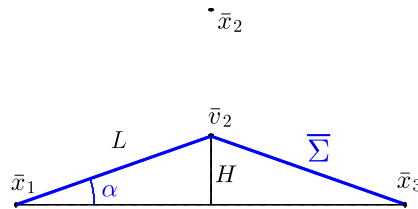


Fig. 1. The basic configuration.

the Normal, Bisectris, and Angle given non-collinear points v_1, v_2, v_3 by $(\xi, b, \beta) = NBA(v_1, v_2, v_3)$. Then we can write $R(v_2) = v_2 + W(NBA(v_1, v_2, v_3))$.

We note that if $\Sigma = \llbracket v_1, \dots, v_m \rrbracket$ then for all $i = 2, \dots, m - 1$, if $TA(v_i) > 0$ $R(v_i) \subseteq v_i + W(NBA(v_{i-1}, v_i, v_{i+1}))$.

3.3. Basic configuration

Here we describe the basic configuration $\bar{\mu}$, whose perturbation is used in the counterexample to regularity. While the construction is rather flexible we choose a fixed configuration to make the number of parameters of the system easier to manage.

Let $m_1 = m_3 = 0.38$, $m_2 = 0.24$, and $\lambda = 0.36$. Let $\bar{x}_1 = (-1, 0)$, $\bar{x}_2 = (0, 1)$, and $\bar{x}_3 = (1, 0)$,

$$\bar{\mu} = m_1 \delta_{\bar{x}_1} + m_2 \delta_{\bar{x}_2} + m_3 \delta_{\bar{x}_3}. \tag{21}$$

Note that the total mass is one.

We now turn to characterizing the minimizer. We note that since λ is greater than one third of the total mass the condition (17) implies that the minimizer can have at most two endpoints. Thus the minimizer is either a point or a piecewise linear curve. We reindex the vertices v_1, \dots, v_m if needed so that the minimizer is $\llbracket v_1, \dots, v_m \rrbracket$.

Let us note that for any point $a \in \mathbb{R}^2$, $E(\{a\}) > E(\llbracket \bar{x}_1, a, \bar{x}_3 \rrbracket)$ and thus a point cannot be a minimizer. Therefore a minimizer is a piecewise linear curve with either one or two line segments. If it has two line segments then $v_2 \neq \bar{x}_1$ since then it would violate angle condition (ii) of Proposition 8, since we know the minimizer must stay in the convex hull of the support of $\bar{\mu}$. If $v_1 \neq \bar{x}_1$ and $v_m \neq \bar{x}_3$ then $E(\llbracket \bar{x}_1, v_1, \dots, v_m \rrbracket) < E(\llbracket v_1, \dots, v_m \rrbracket)$ since $m_1 > \lambda$. Analogously for \bar{x}_3 . Therefore \bar{x}_1 and \bar{x}_3 must be endpoints of any minimizer. So without loss of generality we can set $v_1 = \bar{x}_1$ and $v_m = \bar{x}_3$. If $\llbracket v_1, v_2 \rrbracket$ were a minimizer then \bar{x}_2 would talk to $(0, 0)$ so $(0, 0)$ would have to be a vertex of the graph (as we defined it (6)). But then the condition (13) cannot hold. So the minimizer must be of the form $\llbracket \bar{x}_1, \bar{v}_2, \bar{x}_3 \rrbracket$.

The criticality condition (13) implies that the only minimizer is the symmetric configuration, $\bar{\Sigma}$, presented on Fig. 1. Elementary geometry gives:

$$\bar{v}_2 = (0, H), \quad \text{where } H = \frac{1}{2\sqrt{2}}, \quad L = \frac{3}{2\sqrt{2}}, \quad \text{and } \sin \alpha = \frac{1}{3}. \tag{22}$$

4. Construction of the counterexample

We start with the basic configuration $\bar{\mu}$ defined in (21), which we now consider as configuration in \mathbb{R}^d by taking the values of coordinates from 3 to d to be zero.

To smooth out the basic configuration, we use a standard mollifier η . That is, let η be smooth, radially symmetric, positive on $B(0, 1)$, equal to zero outside of $B(0, 1)$, and such that $\int_{\mathbb{R}^d} \eta(x) dx = 1$. For $\delta > 0$ let $\eta_\delta(z) = \frac{1}{\delta^d} \eta(\frac{z}{\delta})$. Let $\rho_{i,\delta} = m_i \eta_\delta(\cdot - \bar{x}_i)$ for $i = 1, 2, 3$ and let μ_δ be the measure with density $\rho_{1,\delta} + \rho_{2,\delta} + \rho_{3,\delta}$.

To have a measure with connected and convex support we introduce the background measure $\tilde{\mu}$ to be the measure with density $\eta_{1.5}$. The smooth measure we consider is

$$\mu_{q,\delta} = (1 - q)\mu_\delta + q\tilde{\mu}.$$

Theorem 12. *There exist $\delta > 0$ and $1 > q > 0$ such that there is a minimizer of E for $\lambda = 0.36$ and $\mu = \mu_{q,\delta}$ which is a Lipschitz curve such that if one considers its constant-speed parameterization $\gamma : [0, 1] \rightarrow \mathbb{R}^d$ ($|\gamma'(s)| = \text{length}(\gamma)$)*

for a.e. $s \in [0, 1]$ then γ' is an \mathbb{R}^d valued BV function such that γ'' has an atom of size at least 1 at some $\underline{s} \in (0, 1)$. More precisely $|\gamma''(\{\underline{s}\})| \geq 1$.

Proof. Assume that ε satisfies the condition

$$(C1) \quad 0 < \varepsilon < \frac{\alpha}{2000}.$$

Corollary 5 implies that for $\delta > 0$ and $q > 0$ small enough any minimizer of $E_{\mu_{q,\delta}}$ lies within ε ball of $\bar{\Sigma}$ in Hausdorff metric. That is, we can impose

$$(C2) \quad q > 0 \text{ and } \delta > 0 \text{ are small enough so that any minimizer } \Sigma_{q,\delta} \text{ of } E_{\mu_{q,\delta}} \text{ satisfies } d_H(\Sigma_{q,\delta}, \bar{\Sigma}) < \frac{\varepsilon}{2}.$$

We also require:

$$(C3) \quad q < \frac{2\lambda}{\pi} \frac{\alpha}{20000}.$$

$$(C4) \quad \delta < 0.1\varepsilon.$$

The condition (C3) controls the part of the turning angle which is due to the background measure.

Step 1^o. Discrete approximation. Let $\mu_{q,\delta,n}$ be an approximation of $\mu_{q,\delta}$ which is a particle measure such that the Wasserstein distance $d_W(\mu_{q,\delta}, \mu_{q,\delta,n}) < \frac{1}{n}$ and furthermore that there exists an optimal coupling such that all of the mass in the $(1 - q)\rho_{i,\delta}$ part of $\mu_{q,\delta}$ is coupled with particles in $B(\bar{x}_i, \delta)$ for $i = 1, 2, 3$. This can be achieved by, say, taking a fine square grid such that \bar{x}_1, \bar{x}_2 , and \bar{x}_3 are cell centers and then constructing $\mu_{q,\delta,n}$ by taking the mass of $\mu_{q,\delta}$ in each grid cell and concentrating it at the center of the grid cell.

Due to Corollary 4, along a subsequence, minimizers, $\Sigma_{q,\delta,n}$ (if nonunique then any minimizer can be chosen), converge in Hausdorff metric to a minimizer $\Sigma_{q,\delta}$ of $E_{\mu_{q,\delta}}$. We can assume without loss of generality that the whole sequence converges and that n is large enough so that

$$d_H(\Sigma_{q,\delta,n}, \Sigma_{q,\delta}) < \frac{\varepsilon}{2}$$

which implies, using (C2), that $d_H(\Sigma_{q,\delta,n}, \bar{\Sigma}) < \varepsilon$.

Step 2^o. Control of the optimal coupling. We claim that particles of $\mu_{q,\delta,n}$ which lie in $B(\bar{x}_2, \delta)$ can only talk to points on $\Sigma_{q,\delta,n}$ which lie above (in the direction of e_2) the hyperplane $P = \{y : y \cdot e_2 = H - \delta - \frac{\varepsilon}{\cos \alpha}\}$.

To prove the claim consider $x_i \in B(\bar{x}_2, \delta)$. Let \tilde{x}_i be the projection of x_i onto the coordinate axis in the direction of the vector e_2 . That is $\tilde{x}_i = (0, x_{i,2}, 0, \dots, 0)$. Let $U = \{z : d(z, \bar{\Sigma}) < \varepsilon \text{ and } z \cdot e_1 = 0\}$. We note that $U \cap \Sigma_{q,\delta,n} \neq \emptyset$. An elementary geometry argument shows that the furthest point to \tilde{x}_2 on \bar{U} is $(0, H - \frac{\varepsilon}{\cos \alpha}, 0, \dots, 0)$. Thus

$$d(x_i, \Sigma_{q,\delta,n}) \leq d(x_i, \tilde{x}_i) + d(\tilde{x}_i, \Sigma_{q,\delta,n}) < \delta + x_{i,2} - H + \frac{\varepsilon}{\cos \alpha}.$$

On the other hand

$$d(x_i, P) = x_{i,2} + \delta - H + \frac{\varepsilon}{\cos \alpha}.$$

Step 3^o. Average tangent direction. Since $\Sigma_{q,\delta,n}$ has only two endpoints, and is piecewise linear, it can be represented by a constant-speed parameterized curve $\gamma_{q,\delta,n} : [0, 1] \rightarrow \mathbb{R}^d$. Due to the closeness to $\bar{\Sigma}$ (by Step 1) there are points on $\Sigma_{q,\delta,n}$ which are within ε of \bar{x}_1 and \bar{x}_3 .

We claim that the endpoints of the curve must lie within 2ε of \bar{x}_1 and \bar{x}_3 . For if that was not the case then all of the mass in, say, $B(\bar{x}_1, \delta)$ would not talk to an endpoint. But then there would not be enough available mass for the lower bound on the mass talking to the endpoints (condition (17)) to be satisfied.

We can require that $\gamma_{q,\delta,n}(0)$ lies close to \bar{x}_1 . We define

$$\theta(s) = \frac{\gamma'_{q,\delta,n}(s)}{|\gamma'_{q,\delta,n}(s)|} = \frac{\gamma'_{q,\delta,n}(s)}{\text{length}(\gamma_{q,\delta,n})}.$$

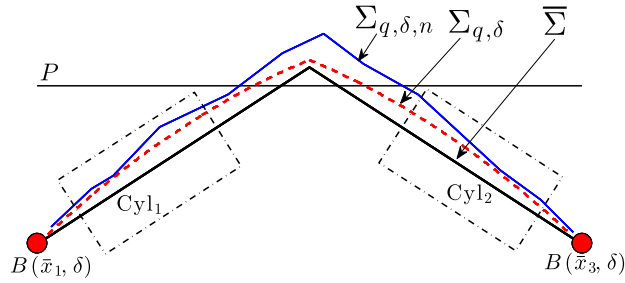


Fig. 2. Schematic illustration of minimizers of $E_{\bar{\mu}}$, $E_{\mu_{q,\delta}}$, and $E_{\mu_{q,\delta,n}}$. Some lengths are distorted to achieve better clarity of the illustration.

We note that $\theta \in BV([0, 1], \mathbb{R}^d)$. Let

$$\bar{\theta}_1 = \frac{\bar{v}_2 - \bar{x}_1}{|\bar{v}_2 - \bar{x}_1|} \quad \text{and} \quad \bar{\theta}_2 = \frac{\bar{x}_3 - \bar{v}_2}{|\bar{x}_3 - \bar{v}_2|}.$$

Let $\text{Cyl}_1 = \{x \in \mathbb{R}^d: d(x, \bar{\Sigma}) < \varepsilon \text{ and } (x - \bar{x}_1) \cdot \bar{\theta}_1 \in [2\varepsilon, L - 11\varepsilon]\}$ and $\text{Cyl}_2 = \{x \in \mathbb{R}^d: d(x, \bar{\Sigma}) < \varepsilon \text{ and } -(x - \bar{v}_2) \cdot \bar{\theta}_2 \in [2\varepsilon, L - 11\varepsilon]\}$, as shown on Fig. 2. Let $s_{1,1,n}$ be the first time $\gamma_{q,\delta,n}$ enters Cyl_1 and $s_{1,2,n}$ the largest time $\gamma_{q,\delta,n}$ belongs to Cyl_1 . Analogously $s_{2,1,n}$ and $s_{2,2,n}$ are the corresponding times for the domain Cyl_2 . Let $\theta_{i,\text{avg}} = \frac{\gamma_{q,\delta,n}(s_{i,2,n}) - \gamma_{q,\delta,n}(s_{i,1,n})}{|\gamma_{q,\delta,n}(s_{i,2,n}) - \gamma_{q,\delta,n}(s_{i,1,n})|}$ for $i = 1, 2$. We claim that $\angle \bar{\theta}_i \theta_{i,\text{avg}} < 0.01\alpha$ for $i = 1, 2$. To see this, note that $\tan \angle \bar{\theta}_i \theta_{i,\text{avg}}$ is less than twice the width of the cylinder Cyl_i divided by its length: $\tan \angle \bar{\theta}_i \theta_{i,\text{avg}} < \frac{2\varepsilon}{L-13\varepsilon} < \frac{4\varepsilon}{L} < 0.005\alpha$ by (C1), which implies the claim.

Step 4^o. Tangent at the end of the cylinders. The cylinders Cyl_1 and Cyl_2 were defined so that they lie below the hyperplane P , as can be verified by simple trigonometry. Step 2 then implies that no point that belongs to $B(\bar{x}_i, \delta)$ for $i = 1, 2, 3$ talks to any point in the cylinders. Thus, using the turning angle estimate (18) and assumption (C3), $TA(\text{Cyl}_i \cap \Sigma_{q,\delta,n}) \leq \frac{\pi q}{2\lambda} < \frac{\alpha}{100}$. Therefore the tangent at the any point in Cyl_i is close to the average tangent. Let

$$\theta_1 = \frac{\gamma'_{q,\delta,n}(s_{1,2,n}+)}{\text{length}(\gamma_{q,\delta,n})} := \lim_{s \searrow s_{1,2,n}} \frac{\gamma'_{q,\delta,n}(s)}{\text{length}(\gamma_{q,\delta,n})} \quad \text{and} \quad \theta_2 = \frac{\gamma'_{q,\delta,n}(s_{2,1,n}-)}{\text{length}(\gamma_{q,\delta,n})}$$

be the tangents as the curve exits Cyl_1 and as it enters Cyl_2 . Then $\angle \theta_i \theta_{i,\text{avg}} < 0.01\alpha$. Combining with estimates of Step 3 we get

$$\angle \bar{\theta}_i \theta_i \leq \angle \bar{\theta}_i \theta_{i,\text{avg}} + \angle \theta_{i,\text{avg}} \theta_i < 0.02\alpha \quad \text{for } i = 1, 2.$$

Step 5^o. The turning angle at the first contact point. We now show that there exists a vertex at which the turning angle is large (of size at least about $\alpha/2$). This is the key point of the argument. Let us relabel the vertices if necessary, so that their indices are increasing along $\gamma_{q,\delta,n}$ as s increases. Let v_j be the first vertex of $\gamma_{q,\delta,n}$ that talks to any particle of $\mu_{q,\delta,n}$ in $B(\bar{x}_2, \delta)$, as illustrated on Fig. 3. The reason that the turning angle has to be “large” is that the tangent cannot turn much prior to v_j (because the vertices talk to very little mass), but for v_j to be able to talk to a point in $B(\bar{x}_2, \delta)$ the tangent must turn by at least by about α . Thus it has to turn by that amount precisely at v_j .

Here is the detailed argument. Let

$$\theta_- = \frac{v_j - v_{j-1}}{|v_j - v_{j-1}|} \quad \text{and} \quad \theta_+ = \frac{v_{j+1} - v_j}{|v_{j+1} - v_j|}.$$

Let \underline{s}_n be the time at which $\gamma_{q,\delta,n}(\underline{s}_n) = v_j$. Since points on $\gamma_{q,\delta,n}|_{[s_{1,2,n}, \underline{s}_n]}$ can only talk to the background measure $q\bar{\mu}$, it follows from (18) that $TA(\gamma_{q,\delta,n}([s_{1,2,n}, \underline{s}_n])) < \frac{\pi q}{2\lambda} < 0.01\alpha$. Combining with Step 4 implies

$$\angle \bar{\theta}_1 \theta_- < 0.03\alpha. \tag{23}$$

Let $K = \{x: d(x, \bar{\Sigma}) < \varepsilon, x \cdot e_2 > H - \delta - \frac{\varepsilon}{\cos \alpha}\}$. From Step 2 follows that $v_j \in K$. Let $y \in B(\bar{x}_2, \delta)$. We can decompose vectors in \mathbb{R}^d into the component in the direction of e_2 (vertical component) and the one in the orthogonal complement of e_2 (horizontal component). Elementary geometry implies using the assumptions (C1) and (C4) that

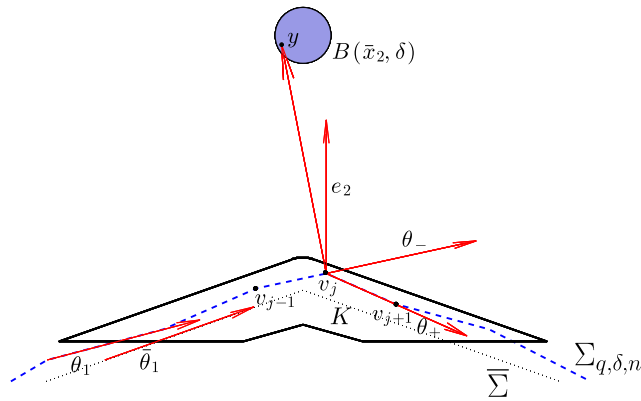


Fig. 3. Details of the configuration and relevant angles near the tip.

the horizontal distance between y and any point in K is less than $6\varepsilon + 4\delta < 7\varepsilon$, while the vertical distance is greater than $1 - H - \varepsilon - \delta > \frac{1}{2}$. Hence

$$\angle(y - v_j)e_2 \leq \tan \angle(y - v_j)e_2 < 14\varepsilon < 0.01\alpha. \tag{24}$$

Using that $\angle\bar{\theta}_1 e_2 = \frac{\pi}{2} - \alpha$ and $\angle\bar{\theta}_1\theta_- < 0.03\alpha$. We conclude that for all $y \in B(\bar{x}_2, \delta)$,

$$\angle(y - v_j)\theta_- \leq \angle(y - v_j)e_2 + \angle e_2\bar{\theta}_1 + \angle\bar{\theta}_1\theta_- < \frac{\pi}{2} - 0.96\alpha.$$

Let $W_j = W(NBA(v_{j-1}, v_j, v_{j+1}))$. Recall that $R(v_j) \subseteq W_j$. Note that θ_- is orthogonal to one side of the wedge W_j . Also note that by definition of v_j , there exists $y \in W_j \cap B(\bar{x}_2, \delta)$. Let 2β be the opening of the wedge. Then

$$TA(v_j) = 2\beta \geq \frac{\pi}{2} - \angle\theta_-(y - v_j) > 0.96\alpha.$$

Step 6^o. Angle bisector estimate. As a consequence of the estimate we obtain that $TA(v_j) > 1.88\alpha$.

The idea of this step is as follows: In the previous step we have shown that the turning angle at v_j is “large”. The criticality condition (13) shows that v_j is thus talking to a large mass. Since the only large mass in the region of influence lies within $B(\bar{x}_2, \delta)$ this implies that the bisector of the angle $\angle v_{j-1}v_jv_{j+1}$ passes through, or close to, $B(\bar{x}_2, \delta)$ which implies that the turning angle at v_j is about 2α .

More precisely, let m_{aux} be the mass of the particle of $\mu_{q, \delta, n}$ at v_j if it is tied down and zero otherwise. We note that $m_{aux} \leq q < 0.001\alpha$ by (C3). Therefore using (13), (14), and $\mu_{q, \delta, n} = \sum_i m_i \delta_{x_i}$ one obtains

$$\left| \sum_{i \in I_j, x_i \neq v_j} T_{ij} \frac{x_i - v_j}{|x_i - v_j|} \right| \geq \lambda|\theta_+ - \theta_-| - m_{aux} \geq \lambda \left(2 \sin \frac{TA(v_j)}{2} \right) - 0.001\alpha.$$

Using that $TA(v_j) > 0.96\alpha$ and that $\sin \alpha = \frac{1}{3}$ and $\lambda = 0.36$ we conclude that $\sum_{i \in I_j} T_{ij} > 0.08$.

Let $I = \{i \in I_j: x_i \in B(\bar{x}_2, \delta)\}$, $w_1 = \sum_{i \in I} T_{ij} \frac{x_i - v_j}{|x_i - v_j|}$, and $w_2 = \sum_{i \in I_j \setminus I} T_{ij} \frac{x_i - v_j}{|x_i - v_j|}$. Since for all $i \in I$, $\angle(x_i - v_j)(\bar{x}_2 - v_j) < 0.01\alpha$ we conclude that

$$|w_1| \geq \sum_{i \in I} T_{ij} \frac{x_i - v_j}{|x_i - v_j|} \cdot \frac{\bar{x}_2 - v_j}{|\bar{x}_2 - v_j|} \geq \frac{2}{3} \sum_{i \in I} T_{ij} > 0.05$$

and $\angle w_1(\bar{x}_2 - v_j) < 0.01\alpha$, where T is any matrix satisfying (8). By definition of w_2 :

$$|w_2| \leq q.$$

Therefore, using the sine theorem, $\sin \angle((w_1 + w_2), w_1) < \frac{q}{0.05}$. Conditions (13) and (14) give

$$|w_1 + w_2 + \lambda(\theta_+ - \theta_-)| \leq m_{aux}.$$

Thus, by sine theorem,

$$\angle(w_1 + w_2)(-\theta_+ - \theta_-) \leq \frac{m_{aux}}{\lambda|\theta_+ - \theta_-|} < \frac{3q}{\lambda},$$

where we used that $|\bar{\theta}_2 - \bar{\theta}_1| = 2 \sin \alpha = 2/3$ to obtain lower bound $|\theta_+ - \theta_-| > 1/3$. Hence, using the condition (C3), $\angle(\theta_- - \theta_+)w_1 \leq \angle(w_1 + w_2)w_1 + \frac{3q}{\lambda} < \frac{\pi}{2} \frac{q}{0.05} + \frac{3q}{\lambda} < 0.01\alpha$. Hence for $(v, b, \beta) = NBA(v_{j-1}, v_j, v_{j+1})$ we conclude that $\angle b(\bar{x}_2 - v_j) \leq \angle b w_1 + \angle w_1(\bar{x}_2 - v_j) < 0.02\alpha$. Therefore, by using the estimates (23) and (24),

$$\angle b\theta_- \leq \angle b(\bar{x}_2 - v_j) + \angle(\bar{x}_2 - v_j)e_2 + \angle e_2\bar{\theta}_1 + \angle\bar{\theta}_1\theta_- \leq \frac{\pi}{2} - 0.94\alpha.$$

Therefore

$$TA(v_j) = \pi - 2\angle b\theta_- \geq 1.88\alpha.$$

Step 7^o. Symmetry argument. In Steps 5 and 6, we considered v_j , the first vertex of $\gamma_{q,\delta,n}$ which talks to any particle of $\mu_{q,\delta,n}$ in $B(\bar{x}_2, \delta)$. The same arguments apply if one considers the last vertex of $\gamma_{q,\delta,n}$, denote it be v_k (with $k \geq j$), talking to any particle of $\mu_{q,\delta,n}$ in $B(\bar{x}_2, \delta)$. Thus $TA(v_k) \geq 1.88\alpha$. We claim that $k = j$. For if one assumes that $k > j$ then

$$TA(\gamma_{q,\delta,n}([s_{1,2,n}, s_{2,1,n}])) > 3.76\alpha.$$

However by estimate 18

$$TA(\gamma_{q,\delta,n}([s_{1,2,n}, s_{2,1,n}])) \leq \frac{\pi}{2\lambda}(m_2 + q) < \frac{\pi}{0.72} \cdot 0.25 < 3.3\alpha$$

which contradicts the statement above. Therefore k must equal j . That is v_j is the only point on $\gamma_{q,\delta,n}$ talking to particles in $B(\bar{x}_2, \delta)$. Furthermore analogously to (23) it holds that $\angle\bar{\theta}_2\theta_+ < 0.03\alpha$. Hence

$$TA(v_j) = \angle\theta_-\theta_+ \geq \angle\bar{\theta}_1\bar{\theta}_2 - \angle\theta_-\bar{\theta}_1 - \angle\theta_+\bar{\theta}_2 \geq 2\alpha - 0.03\alpha - 0.03\alpha = 1.94\alpha.$$

Step 8^o. Convergence. By definition of the turning angle, using that $\gamma_{q,\delta,n}$ has constant-speed parameterization and that $|\gamma''_{q,\delta,n}|$ is a measure, for any k it holds that:

$$|\gamma''_{q,\delta,n}|(\{t_{k,n}\}) = |\gamma'_{q,\delta,n}(t_{k,n}+) - \gamma'_{q,\delta,n}(t_{k,n}-)| = 2 \text{length}(\gamma_{q,\delta,n}) \sin \frac{TA(v_k)}{2} \tag{25}$$

where $t_{k,n} = \gamma_{q,\delta,n}^{-1}(v_k)$. Therefore, using the estimate on the turning angle (18),

$$\begin{aligned} |\gamma''_{q,\delta,n}|([s_{1,2,n}, s_{2,1,n}] \setminus \{\underline{s}_n\}) &\leq \text{length}(\gamma_{q,\delta,n})TA(\gamma_{q,\delta,n}([s_{1,2,n}, s_{2,1,n}] \setminus \{\underline{s}_n\})) \\ &\leq \text{length}(\gamma_{q,\delta,n}) \frac{\pi q}{2\lambda} \\ &< \text{length}(\gamma_{q,\delta,n}) * 0.01\alpha. \end{aligned} \tag{26}$$

Given that $\text{length}(\gamma_{q,\delta,n})$ is uniformly bounded from above and below in n , that distance between $|\gamma_{q,\delta,n}(s_{1,2,n}) - \gamma_{q,\delta,n}(s_{2,1,n})| \geq d(\text{Cyl}_1, \text{Cyl}_2) > 0$ and $|\gamma_{q,\delta,n}(\underline{s}_n) - \gamma_{q,\delta,n}(s_{1,2,n})| \geq d(K, \text{Cyl}_1) > 0$ we conclude that along a subsequence $s_{1,2,n} \rightarrow s_1$, $s_{2,1,n} \rightarrow s_2$, and $\underline{s}_n \rightarrow \underline{s}$ as $n \rightarrow \infty$ with $0 < s_1 < \underline{s} < s_2 < 1$. By relabeling we can assume that the subsequence is the whole sequence.

Let $a_n = \gamma''_{q,\delta,n}(\{\underline{s}_n\})$ and ζ_n be such that $\gamma''_{q,\delta,n} = a_n\delta_{\underline{s}_n} + \zeta_n$. From Step 7 and (25) it follows that $|a_n| > 2 \text{length}(\gamma_{q,\delta,n}) \sin 0.97\alpha$.

From Lemma 6 it follows that along a subsequence $\gamma'_{q,\delta,n} \rightarrow \gamma'_{q,\delta}$ in L^1 and $\gamma''_{q,\delta,n} \xrightarrow{*} \gamma''_{q,\delta}$ in the space of signed measures as $n \rightarrow \infty$. Along a further subsequence $a_n \rightarrow a$ as $n \rightarrow \infty$. By relabeling we can assume that the subsequence is the whole sequence. The L^1 convergence of gradients implies that $\text{length}(\gamma_{q,\delta,n}) \rightarrow \text{length}(\gamma_{q,\delta})$ as $n \rightarrow \infty$, and thus $|a| \geq 2 \text{length}(\gamma_{q,\delta}) \sin 0.97\alpha$. Furthermore $a_n\delta_{\underline{s}_n} \xrightarrow{*} a\delta_{\underline{s}}$ as $n \rightarrow \infty$. Consequently $\zeta_n \xrightarrow{*} \zeta$ for some vector of measures ζ .

Let $r > 0$ be small enough so that $[\underline{s} - r, \underline{s} + r] \subset (s_1, s_2)$. Then for all n large enough, (26) implies $|\zeta_n|([\underline{s} - r, \underline{s} + r]) < \text{length}(\gamma_{q,\delta,n}) * 0.01\alpha$. Therefore $|\zeta|([\underline{s} - r, \underline{s} + r]) \leq \text{length}(\gamma_{q,\delta}) * 0.01\alpha$.

Consequently $|\gamma''_{q,\delta}(\{\underline{s}\})| \geq |a| - |\zeta(\{\underline{s}\})| > \text{length}(\gamma_{q,\delta})(2 \sin(0.97\alpha) - 0.01\alpha) > 2(L - 3\epsilon)\frac{3}{2} \sin \alpha > 3 \sin \alpha = 1$. Therefore thus $|\gamma''_{q,\delta}|$ has an atom of size at least 1 at \underline{s} . \square

5. The constrained problem

We now consider the original average-distance problem introduced in [1]. The task is to minimize

$$F(\Sigma) = \int_{\mathbb{R}^d} d(x, \Sigma) d\mu(x) \quad \text{over } \mathcal{A}_1 := \{\Sigma \in \mathcal{A}: \mathcal{H}^1(\Sigma) \leq 1\}. \quad (27)$$

5.1. Construction of the counterexample

The existence of a measure μ for which the minimizer (27) is a Lipschitz curve which has a corner follows from Theorem 12:

Corollary 13. *There exist $r > 0$, $\delta > 0$ and $1 > q > 0$ such that there is a minimizer of (27) for $\mu = D_r \mu_{q,\delta}$ which is a Lipschitz curve such that if one considers its arc-length parameterization $\gamma : [0, 1] \rightarrow \mathbb{R}^d$ then γ' is an \mathbb{R}^d valued BV function such that γ'' has an atom of size at least $1/3$ at some $\underline{s} \in (0, 1)$. More precisely $|\gamma''(\{\underline{s}\})| \geq 1/3$.*

Proof. Let $\lambda = 0.36$ and let $\mu_{q,\delta}$ be as in the proof of Theorem 12. Let $r = \text{length}(\gamma_{q,\delta})$. Thus $\mathcal{H}^1(\frac{1}{r} \Sigma_{q,\delta}) = 1$. By the scaling discussed in Section 2.1, $\frac{1}{r} \Sigma_{q,\delta}$ is a minimizer of $E_{D_r \mu_{q,\delta}}$. These facts imply that $\frac{1}{r} \Sigma_{q,\delta}$ is a minimizer of (27). We claim that $r < 3$. The conclusion then follows from properties of $\Sigma_{q,\delta}$ established in the proof of Theorem 12.

To prove that $r < 3$ note that for energy (1) corresponding to $\mu_{q,\delta}$ we have $E(\Sigma_{q,\delta}) \leq E(\bar{\Sigma})$ since $\Sigma_{q,\delta}$ is a minimizer. By assumption (C2)

$$\int d(x, \Sigma_{q,\delta}) d\mu_{q,\delta} \geq \int d(x, \bar{\Sigma}) - \varepsilon d\mu_{q,\delta} = \int d(x, \bar{\Sigma}) d\mu_{q,\delta} - \varepsilon.$$

Using (22), $E(\Sigma_{q,\delta}) \leq E(\bar{\Sigma})$ implies

$$r = \text{length}(\gamma_{q,\delta}) \leq \mathcal{H}^1(\bar{\Sigma}) + \frac{\varepsilon}{\lambda} = 2 \cdot \frac{3}{2\sqrt{2}} + 0.01 < 3. \quad \square$$

Acknowledgements

The author would like to thank Thomas Laurent, with whom he started studying average-distance type functionals, for many insights and ideas. He is also thankful to Giovanni Leoni for his help and numerous valuable suggestions and observations and to Xin Yang Lu and Edoardo Mainini for careful reading of an early version and many useful comments. Furthermore the author acknowledges the support by NSF grants DMS-0908415 and DMS-1211760. He is also grateful to the Center for Nonlinear Analysis (NSF grant DMS-0635983) for its support. The research was also supported by NSF PIRE grant OISE-0967140.

References

- [1] G. Buttazzo, E. Oudet, E. Stepanov, Optimal transportation problems with free Dirichlet regions, in: Variational Methods for Discontinuous Structures, in: Progr. Nonlinear Differential Equations Appl., vol. 51, Birkhäuser, Basel, 2002, pp. 41–65.
- [2] G. Buttazzo, E. Stepanov, Optimal transportation networks as free Dirichlet regions for the Monge–Kantorovich problem, Ann. Sc. Norm. Super. Pisa Cl. Sci. (5) 2 (4) (2003) 631–678.
- [3] A. Lemenant, A presentation of the average distance minimizing problem, in: Teoriya Predstavlenii, Dinamicheskie Sistemy, Kombinatornye Metody. XX, Zap. Nauchn. Sem. S.-Peterburg. Otdel. Mat. Inst. Steklov. (POMI) 390 (2011) 117–146, 308, <http://dx.doi.org/10.1007/s10958-012-0717-3>.
- [4] E. Paolini, E. Stepanov, Qualitative properties of maximum distance minimizers and average distance minimizers in \mathbb{R}^n , J. Math. Sci. (N. Y.) 122 (3) (2004) 3290–3309, problems in mathematical analysis, <http://dx.doi.org/10.1023/B:JOTH.0000031022.10122.f5>.
- [5] P. Tilli, Some explicit examples of minimizers for the irrigation problem, J. Convex Anal. 17 (2) (2010) 583–595.
- [6] A. Lemenant, About the regularity of average distance minimizers in \mathbb{R}^2 , J. Convex Anal. 18 (4) (2011) 949–981.
- [7] G. Buttazzo, E. Mainini, E. Stepanov, Stationary configurations for the average distance functional and related problems, Control Cybernet. 38 (4A) (2009) 1107–1130.
- [8] F. Santambrogio, P. Tilli, Blow-up of optimal sets in the irrigation problem, J. Geom. Anal. 15 (2) (2005) 343–362, <http://dx.doi.org/10.1007/BF02922199>.

- [9] L. Ambrosio, N. Fusco, D. Pallara, *Functions of Bounded Variation and Free Discontinuity Problems*, Oxford Math. Monogr., The Clarendon Press, Oxford University Press, New York, 2000.
- [10] G. Leoni, *A First Course in Sobolev Spaces*, Grad. Stud. Math., vol. 105, American Mathematical Society, Providence, RI, 2009.
- [11] E.N. Gilbert, H.O. Pollak, Steiner minimal trees, *SIAM J. Appl. Math.* 16 (1968) 1–29.
- [12] F.K. Hwang, D.S. Richards, P. Winter, The Steiner Tree Problem, *Ann. Discrete Math.*, vol. 53, North-Holland Publishing Co., Amsterdam, 1992.