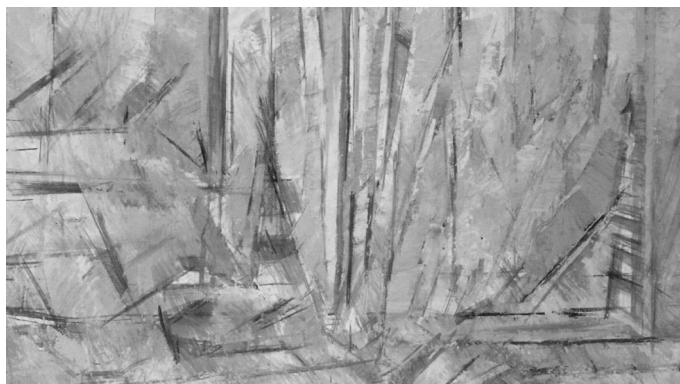


# COMPTES RENDUS MATHÉMATIQUE

Tome 357 (2019) – N° 11–12 – novembre–décembre

---



Fenêtre, 1976, détail, Éric Hallberg ©, né en 1933.  
Fenêtre, 1976, detail, Éric Hallberg ©, born in 1933.

---

## **Combinatoire/Combinatorics**

- On two congruence conjectures  
**Guo-Shuai Mao, Zhi-Jian Cao** ..... 815

## **Théorie des nombres/Number Theory**

- (voir tome 357, série I, 2019, p. 815)
- Arithmetic invariants from Sato–Tate moments  
**Edgar Costa, Francesc Fité, Andrew V. Sutherland** ..... 823
- On the relationship between distinction and irreducibility of parabolic induction  
**Arnab Mitra** ..... 827

## **Algèbre/Algebra**

- The lower extension groups and quotient categories  
**Xiaofa Chen, Xiao-Wu Chen** ..... 832
- On complexity of representations of quivers  
**Victor G. Kac** ..... 841

## **Algèbre homologique/Homological Algebra**

- (voir tome 357, série I, 2019, p. 832)

## **Analyse mathématique/Mathematical Analysis**

- Some geometric properties of Riemann’s non-differentiable function  
**Daniel Eceizabarrena** ..... 846
- A note on estimates for elliptic systems with  $L^1$  data  
**Bogdan Raita, Daniel Spector** ..... 851

## **Théorie du potentiel/Potential Theory**

- A class of maximal plurisubharmonic functions  
**Hoang-Son Do** ..... 858

*Continued on the next page*

Contents (continued)

**Analyse complexe/Complex Analysis**

- (voir tome 357, série I, 2019, p. 858)

**Équations aux dérivées partielles/Partial Differential Equations**

- (voir tome 357, série I, 2019, p. 851)
- Turing patterns induced by cross-diffusion in a 2D domain with strong Allee effect  
**Naveed Iqbal, Ranchao Wu** ..... 863
- Symmetry and classification of solutions to an integral equation of the Choquard type  
**Phuong Le** ..... 878

**Géométrie algébrique/Algebraic Geometry**

- On the deformation rigidity of smooth projective symmetric varieties with Picard number one  
**Shin-Young Kim, Kyeong-Dong Park** ..... 889

**Géométrie différentielle/Differential Geometry**

- Intégrales orbitales semi-simples et centre de l'algèbre enveloppante  
**Jean-Michel Bismut, Shu Shen** ..... 897
- (voir tome 357, série I, 2019, p. 917)

**Systèmes dynamiques/Dynamical Systems**

- (voir tome 357, série I, 2019, p. 863)

**Statistique/Statistics**

- Estimation of the trend function and auto-covariance for spatial models  
**Stéphane Bouka** ..... 907
- Admissibility results under some balanced loss functions for a functional regression model  
**Kouider Djerfi, Fethi Madani, Idir Ouassou** ..... 912

**Problèmes mathématiques de la mécanique/Mathematical Problems in Mechanics**

- Continuity of a surface in Fréchet spaces  
**Philippe G. Ciarlet, Maria Malin, Cristinel Mardare** ..... 917